

# MULTI 485|422 19"

isolated  
multi channel converter

**RS 232c** ↔ **RS 485 / RS 422**

with full RS485 data control for each channel

## TECHNICAL PARAMETERS – for each channel

<b>supported mode</b>	RS485 – half duplex RS422 – full duplex
<b>maximal transfer rate</b>	115 kBd
<b>maximal line length</b>	1 200 m
<b>RS485 transmitter control</b> (seleable by rotary switch)	RTS (DTR) log0/1 TxD
<b>RS485 receiver control</b> (seleable by rotary switch)	RTS (DTR) log0/1 permanent inverse to TxD
<b>galvanic separation</b>	1 kV
<b>overvoltage (soft) protection – line RS485 / RS422</b>	600W/1ms
<b>overvoltage (soft) protection – power supply</b>	600W/1ms
<b>optical indication</b>	RxD, TxD
<b>terminator</b>	120 Ω
<b>connector RS232c</b>	RJ45
<b>connector RS485 / RS422</b>	RJ11

## COMMON TECHNICAL PARAMETERS

<b>maximal number of independent channels</b>	12
<b>power supply</b>	20V DC – 53V DC* or 230V AC *
<b>power consumption</b>	max 20 W
<b>operating temperature</b>	0 to 70 °C
<b>storage temperature</b>	-40 to 80 °C
<b>dimension</b> - 19", 1U	475 x 44 x 220 mm

\* necessary specify in order

## STANDARD SETTING RS485 – for each channel

transmitter control	<b>RTS log 1</b>
receiver control	<b>RTS log 0</b>
terminator	<b>120 Ω</b>
hold line pull-up, pull-down	<b>connected</b>

## WARRANTY CONDITIONS

**ComErgon provides full warranty of 12 month for serial interface module MULTI 485 starting on the day of purchase.**  
The warranty is except for the cases in which the functioning of the module has been affected by faulty manipulation, natural catastrophes or other external factors.



tel.: +421-2- 4445 8783  
tel./ fax.: +421-2- 4425 9006

Pionierska 15, 831 02 Bratislava  
Slovak Republic

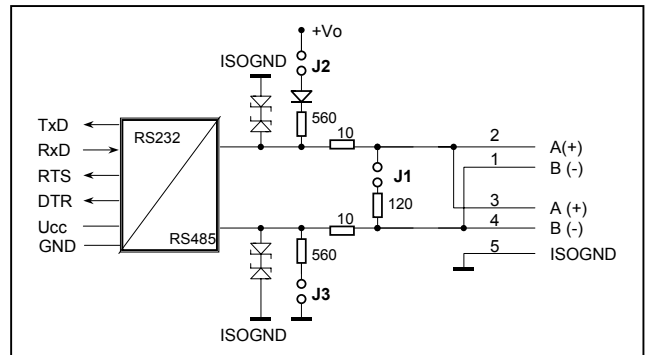
e-mail: [service@comergon.sk](mailto:service@comergon.sk)  
http: [www.comergon.sk](http://www.comergon.sk)

## CONFIGURATION AND LAYOUT

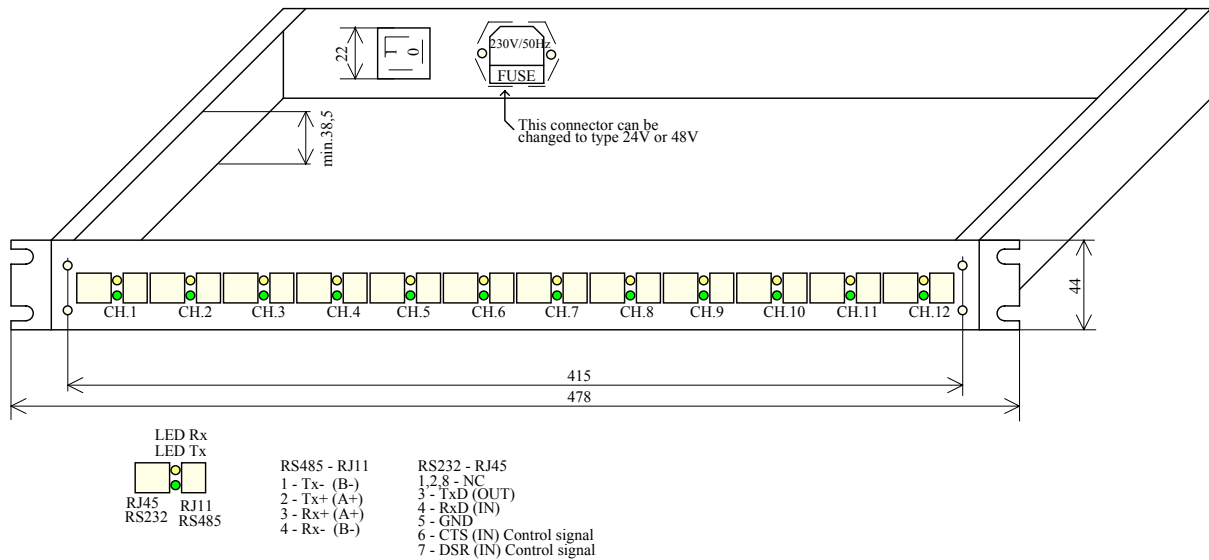
### SELECTION OF OPERATING MODES – rotary switch

SW	TRANSMITTER CONTROL	RECEIVER CONTROL
0, 8	RTS (DTR) loq1(< -3V)	RTS (DTR) loq0 (> +3V)
1, 9	RTS (DTR) loq0	RTS (DTR) loq1
2	TxD	Inverse to TxD
3	-	-
4	RTS (DTR) loq1(< -3V)	permanent
5	RTS (DTR) loq0	permanent
6	TxD	permanent
7	permanent	permanent
<b>TERMINATOR, HOLD LINE</b>		
jumper J1	ON	terminator 120 Ω
jumper J2	ON	hold line – pull down
jumper J3	ON	hold line – pull up

### CONFIGURATION OF RS485 LINE



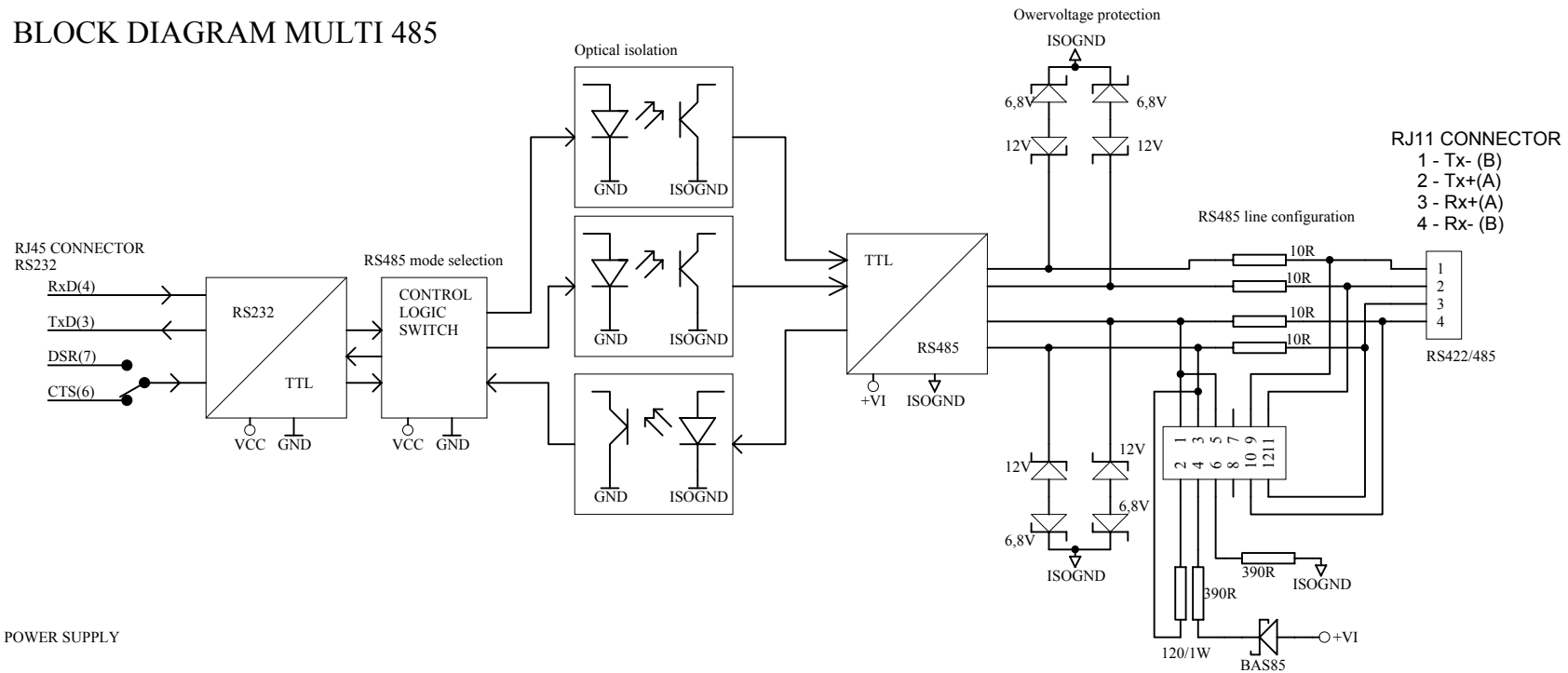
## LAYOUT OF CONNECTORS



**RS485** – A(+), B(-)

**RS422** – Rx+, Rx-, Tx+, Tx-

# BLOCK DIAGRAM MULTI 485



## POWER SUPPLY

